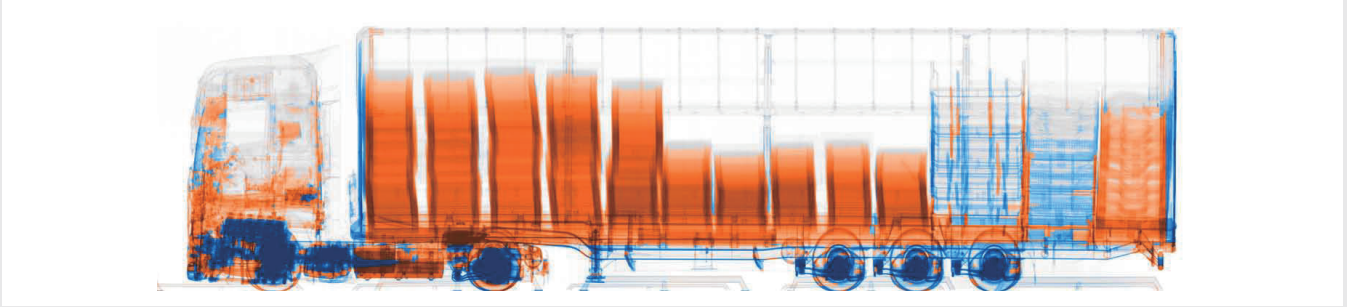


NUCTECH™ MB1215DE **Relocatable Cargo/Vehicle Inspection System**

NUCTECH™ MB1215DE is a relocatable cargo/vehicle inspection system adopting electron linear accelerator as the radiation source. The system presents the features of strong comprehensive performance and large scanning scale. Modularized design is adopted for convenient transportation. The Inspection System can be deployed at port, land border, airport or other places for scanning trucks, containers and all types of heavy vehicles and cargoes.



→ **Material Discrimination**

The Inspection System adopts Dual-energy Imaging Technology to discriminate organic, inorganic and mixed materials. Different materials are marked with specific colors, which helps in identifying the contraband and dangerous goods concealed among cargoes or hidden in the vehicle.

→ **High Penetration and Large Scanning Tunnel**

The Inspection System provides high penetration capability, good quality and better resolution of the scanning images. With various types to choose, the system not only can scan standard containers and trucks, but also large containers and trucks for multi-purpose inspections.

→ **Easy Relocating and Rapid Deploying**

The Inspection System adopts modularized design. It can be relocated and deployed in a short time.

→ **Reliable Radiation Safety**

The Inspection System is designed with the safety of public and operators as paramount importance. It is equipped with safety devices including CCTV, PA, safety interlocks, etc. All the radiation protection criteria are met and in conformity with the relevant standards recommended by international organizations such as IAEA, ICRP and WHO.

Technical Data

Type of X-ray source	Interlaced Dual-energy Electron Linear Accelerator
X-ray energy	6 / 3 MeV
Material discrimination function	Organic, inorganic and mixed materials can be discriminated and marked with specified colors
Penetration	340 mm steel
Max. Dim. of scanned vehicle	20 m (L) × 2.6 m (W) × 4.7 m (H)
Scanning method	Standard Mode: The object keeps still, and the scanning tunnel of the Inspection System moves over the object
Scanning speed	Standard Mode : 0.4 m/s
Throughput	Standard Mode : 20 units of 17 m long vehicle per hour
Power consumption	≤ 60 kVA
Number of operators	4 (one system control operator, two image analyst, one traffic control operator)